



18600



Heavy Blend Adult Full Zip Hooded Sweatshirt

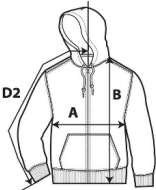
DETAILS

Fabric
Yarn Count
Features

50% US Cotton, 50% Polyester, 271.0 G/SqM
20/1
Heavy Blend features air combed MVS yarn for reduced pilling, and an extensive colour palette.
Proud member of the US Cotton Trust Protocol (USCTP).
Cotton products from Gildan support more sustainable + ethical cotton farming.
2-end midweight fleece fabric
Unlined hood with color-matched drawcord
Metal zipper
Overlapped fabric across zipper allows full front printing
Pouch pocket
1x1 rib with spandex for enhanced stretch and recovery
Classic fit, tubular body
High-performing tear-away label
El Salvador, Honduras
S - 3XL 24 PIECES
4XL - 5XL 12 PIECES
17
100

Country of Origin
Case Packs

Colours
SKU's



SPECIFICATIONS

Centimeters	Tol-	Tol+	S	M	L	XL	2XL	3XL	4XL	5XL
Chest (A)	2.540	2.540	48.895	53.975	59.055	64.135	69.215	74.295	79.375	81.915
Length from HPS (B)	2.540	2.540	68.580	71.120	73.660	76.200	78.740	81.280	83.820	86.360
Sleeve length (Center back) (D2)	2.540	2.540	85.090	87.630	90.170	92.710	95.250	97.790	100.330	102.870
Inches	Tol-	Tol+	S	M	L	XL	2XL	3XL	4XL	5XL
Chest (A)	1.000	1.000	19.250	21.250	23.250	25.250	27.250	29.250	31.250	32.250
Length from HPS (B)	1.000	1.000	27.000	28.000	29.000	30.000	31.000	32.000	33.000	34.000
Sleeve length (Center back) (D2)	1.000	1.000	33.500	34.500	35.500	36.500	37.500	38.500	39.500	40.500

COLOURS

- Ash
- Carolina Blue
- Dark Chocolate
- Dark Heather
- Forest Green
- Graphite Heather
- Irish Green
- Maroon
- Purple
- S Orange
- Safety Green
- White
- Black
- Navy
- Red
- Royal
- Sport Grey

Code	Colour Chip	Sizes	Comments
393	[Chip]	S-2XL	
109	[Chip]	S-2XL	
105	[Chip]	S-2XL	
108	[Chip]	S-2XL	
033	[Chip]	S-2XL	
516	[Chip]	S-2XL	
167	[Chip]	S-2XL	
083	[Chip]	S-2XL	
081	[Chip]	S-2XL	
193	[Chip]	S-2XL	
188	[Chip]	S-2XL	
030	[Chip]	S-2XL	
036	[Chip]	S-5XL	
032	[Chip]	S-5XL	
040	[Chip]	S-5XL	
051	[Chip]	S-5XL	
095	[Chip]	S-5XL	

CHANGES

Total Net Change 0 SKU's